

Great Vision Capital Management Sdn Bhd (Company No: 672074-M)
Unit 19-4, Jalan Setia Prima (S) U13/S, Setia Alam Seksyen U13, 40170 Shah Alam, Selangor

@Great Vision Capital Management Sdn Bhd 01Jan20

ABOUT US

Great Vision Capital Management Sdn Bhd (GVCM) was established in 2004, is an advisory services company specializing in comprehensive personal & business advisory. GVCM provides services on individual estate planning and succession as well as corporate advisory services. Our clients are those who are business owners and high net worth individual who require comprehensive planning & solutions for their wealth and business succession.

OUR SERVICES

Our main services are

- To provide individual estate planning and wealth succession which include
 - Will writing
 - Trust creation
 - Family Business Legacy & Succession
 - Risk Management with Liquidity Planning via offshore insurance solution
 - Family Trust
 - Cross border solutions
 - Private Investment Company
 - Foundation

- To assist business owner to solve the following concern
 - Business Exit Strategies
 - Shareholder Agreement
 - Company Set up
 - Company Restructuring
 - Business Continuation via Master Trust Creation & Advisory Board
 - Buy-Sell Agreement with proper funding solution
 - Offshore business planning
 - Corporate Trust
 - Business Tax Planning & Advisory

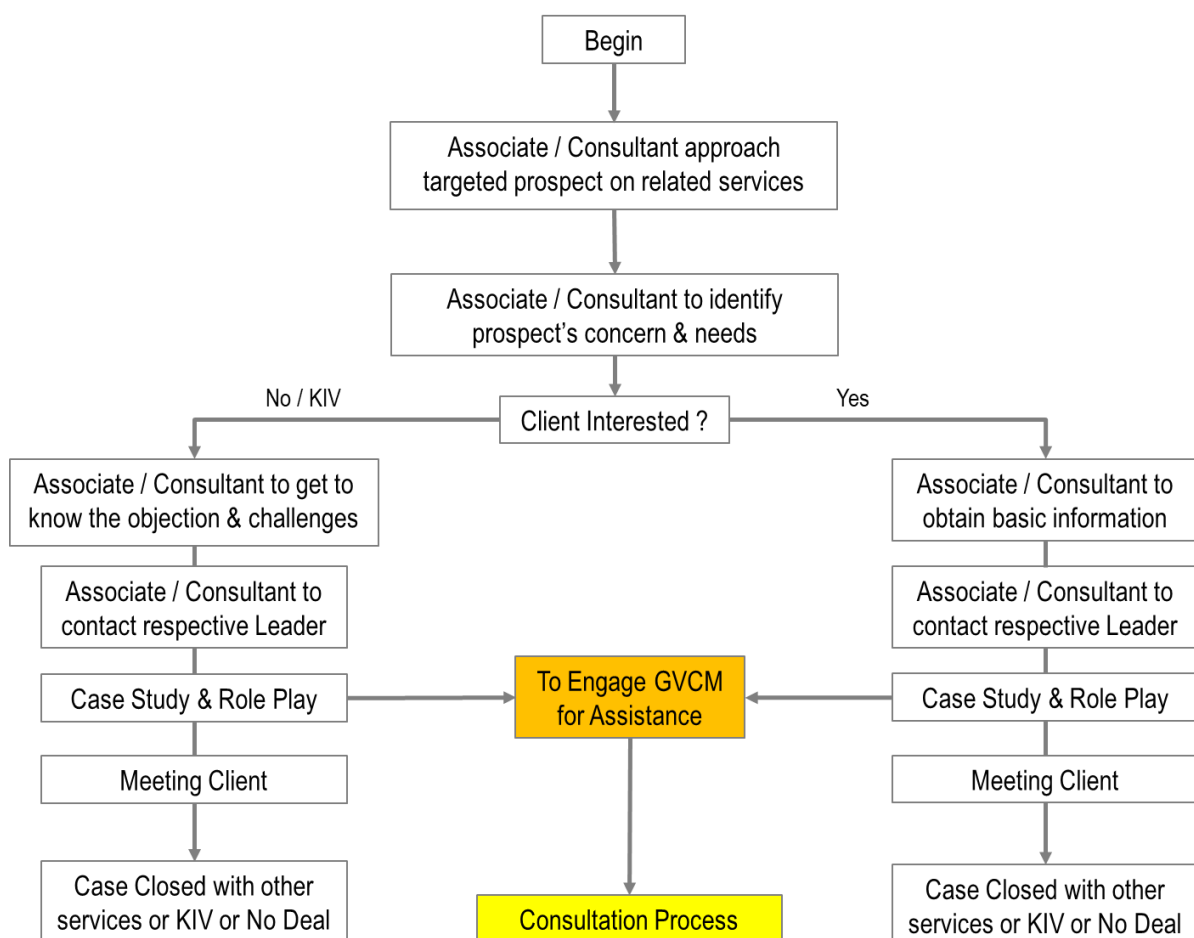
Note: The services are offered by the business collaboration with reputable Trustee Companies, Advisory Firms, Professional Lawyers and Offshore Liquidity Solution Provider.

BUSINESS MECHANISM

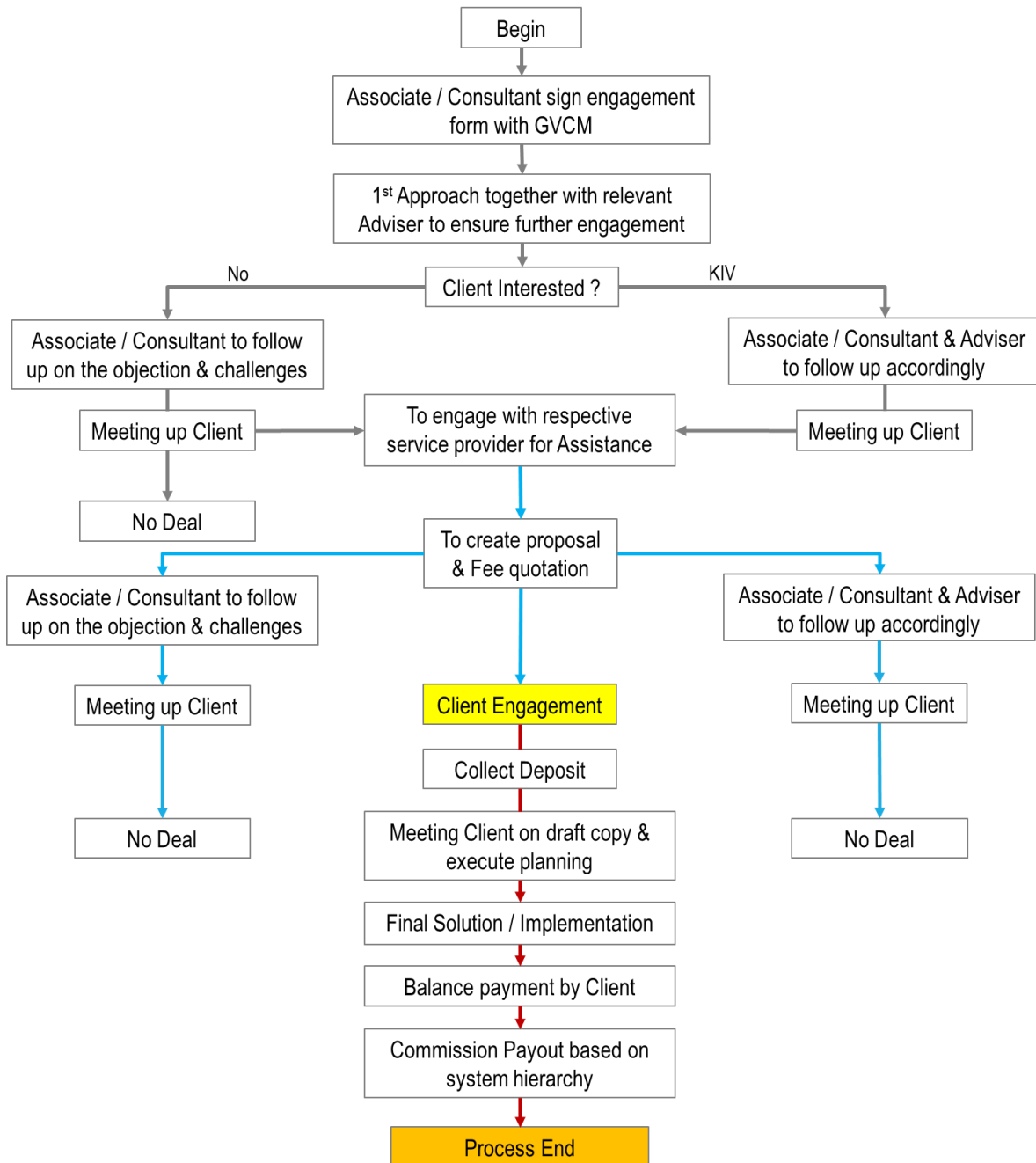
GVCM with its nationwide associates and consultants has been working closely among each other by providing thorough case study, role play and given proper advices prior to the client's meeting. Joint field work approach together with the associates or consultant in meeting up with the targeted prospects is necessary to ensure smooth and proper handling.

The following is the Sales & Consultation Process Flowchart:

Sales Process



Consultation Process



COMPENSATION - Fee and Commission

All fees are quoted according to the fee charged quoted by respective service providers which is excluding the service tax, disbursement, travelling, accommodation & any out-of-pocket expenses if any. The commission for the advisory services as below:-

A. Commission table via Rockwills product services

COMMISSION TABLE – ROCKWILLS

No	Services via Rockwills as provider	Associate / Consultant	BDM / Senior Manager	GAM / Senior Group Manager
1	Will Writing	40%	2%	1%
2	Custody – Annual Custody - Lifetime	25% 15%	2% 2%	1% 1%
3	Appointment of Executor	25%	2%	1%
4	Trust Set up	25%	2%	1%
5	Estate Administration	20%	2%	1%
6	Trust Administration	20%	2%	1%
7	BVPT Set up	12%	2%	1%

Note:

- All commission rate shown above are based on the total amount provided by Rockwills



B. Commission table via Affin Trustee services

COMMISSION TABLE – AFFIN TRUSTEE SERVICES

No	Services via AffinTrust as provider	Associate / Consultant	BDM / Senior Manager	GAM / Senior Group Manager
1	I-Preserve Trust (set up fee)	12.5%	1%	0.5%
2	I-Preserve Plus Trust (set up fee)	12.5%	1%	0.5%
3	Customized Affin Trust (set up fee)	12.5%	1%	0.5%
4	Trust Administration	12.5%	1%	0.5%
5	Universal Life Product *	30%	3%	2%

Note:

- All commission rate shown above are based on the total amount provided by Affin Trustee
- * Universal Life Product is provided by offshore vendor appointed by Affin Trustee and referral fee is obtained through the services.

C. Commission table via Hong Kong Liquidity Provider

COMMISSION TABLE – HONG KONG LIQUIDITY PROVIDER

No	Services via Hong Kong Liquidity provider	Associate / Consultant	BDM / Senior Manager	GAM / Senior Group Manager
1	All Offshore Insurance Product	45%	10%	5%

Note:

- All commission rate shown above are based on the total amount provided by Hong Kong provider



Future Begins Now.